

Recyclables must be placed loose inside your yellow bin or other open top, reusable container (i.e. laundry basket, Rubbermaid container, etc.)

Residential recycling in plastic bags WILL NOT be collected.

✓ **RECYCLABLES MUST BE EMPTY AND RINSED**

Return all eligible liquor, wine, beer containers to the Beer Store for a refund.



Aluminum cans & plates



Aerosol (empty) & tin cans



Cardboard cans



Cartons & drink boxes



Egg cartons (plastic)



Paint cans (METAL, EMPTY/DRY, lids removed)



Plastic bottles, jugs, tubs & lids (Empty liquids)



Glass bottles & jars



Plastic food containers (yogurt, applesauce)



Small scrap metal items - Must fit in your yellow bin - baking sheets, small appliances (i.e. toaster, metal tools, etc.), remove & discard cords in garbage, remove batteries for hazardous waste



Plastic bakery, produce & clam shell packaging

DO NOT PUT IN RECYCLING

- ✗ Containers filled with liquid
- ✗ Home health care waste
- ✗ Sharps & needles (dispose of at your local pharmacy)
- ✗ Sharp items such as knives
- ✗ Batteries
- ✗ Plastic bags & Styrofoam (all types)
- ✗ Propane tanks
- ✗ Black plastic

FIND OUT WHAT GOES WHERE!

Search 100's of items using the online tool at www.ovwrc.com/what-goes-where

This side for Containers



This side for Garbage

DO NOT PUT IN GARBAGE

- ✗ Batteries
- ✗ Needles/Sharps

GARBAGE

4 BAG/CONTAINER LIMIT PER HOUSEHOLD.

Garbage can be set out in plastic bags or garbage cans.



Blister packaging/ bubble-wrap



Candy & chip wrappers



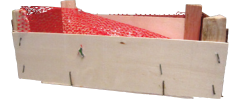
CD/VHS/DVDs & cases



Candles & cork



Cereal/cracker box liners & cookie bags



Wooden clementine crates



Coffee pods (K-Cups, Tassimo T-discs)



Coat hangers (plastic)



Diapers & diaper wipes



Dryer sheets/lint



Florist foam



Flower & planting pots/trays



Furnace filters



Food packaging (deli meat, hot dog wrappers)



Pet food bags



Plastic cutlery



Plastic outer wrap from paper towel, pop, water cases



Rags & unusable clothing



Masks, wipes, rapid test supplies



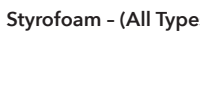
Styrofoam - (All Types)



Plastic wood pellet, salt & sand bags (empty)



Plastic bags (All types)



Toys

- ✓ Aluminum foil
- ✓ Ashes (once cooled, place in a combustible container - i.e. box, bag)

- ✓ Dishes/ceramics
- ✓ Disposable mop/dust sheets
- ✓ Feminine hygiene products
- ✓ Garden hose & clothesline
- ✓ Mirrors/glass (broken glass is acceptable tightly wrapped in a cardboard box or in a rigid reusable container, clearly labeled broken glass and set out for regular garbage collection)
- ✓ Pet waste/cat litter
- ✓ Photographs

- ✓ Pool noodles
- ✓ Smoke/Carbon Monoxide alarms (Remove batteries for hazardous waste disposal)
- ✓ Straws & plastic lids from hot/cold drink cups
- ✓ Styrofoam packing peanuts
- ✓ Vacuum bags

