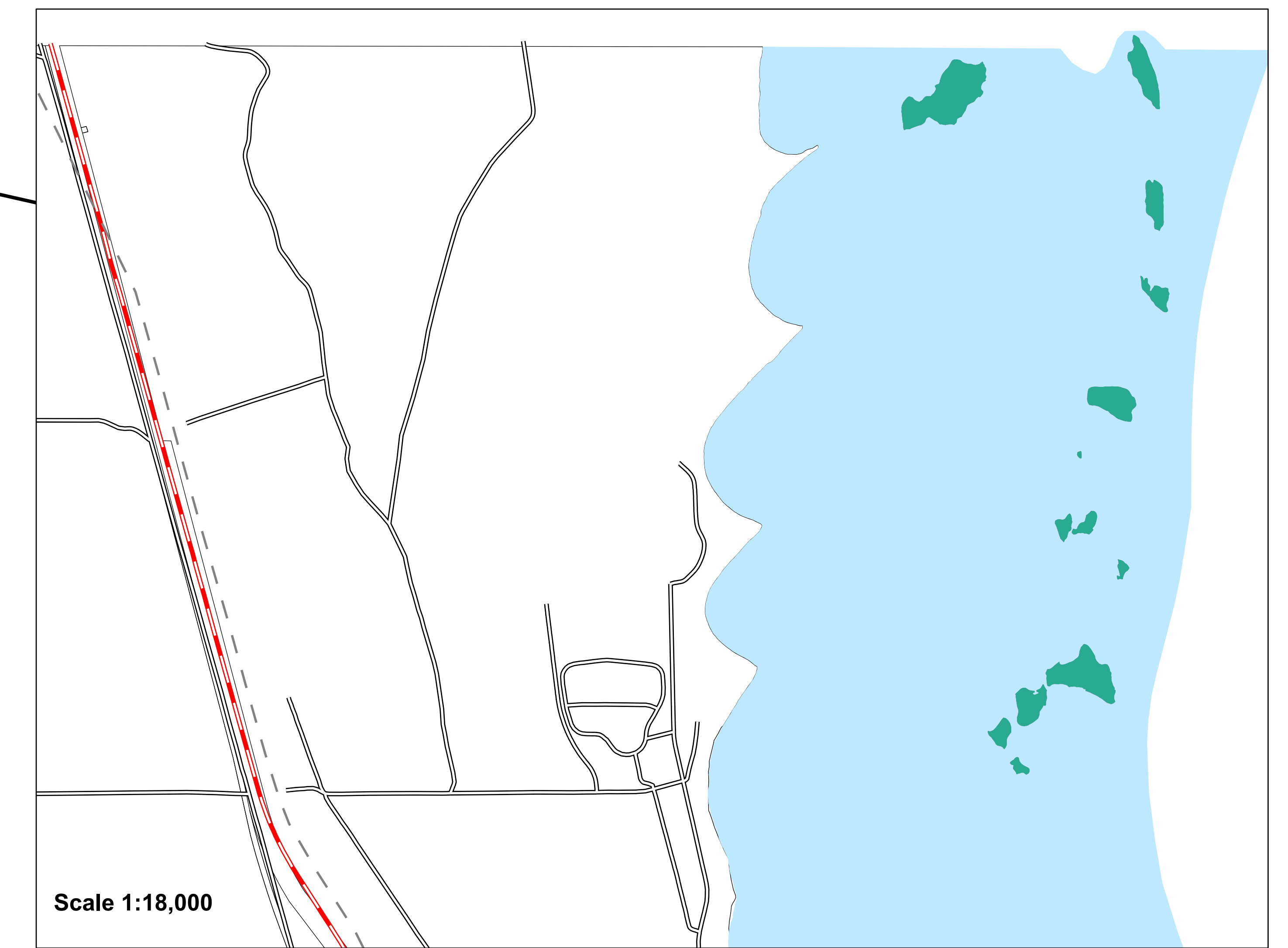
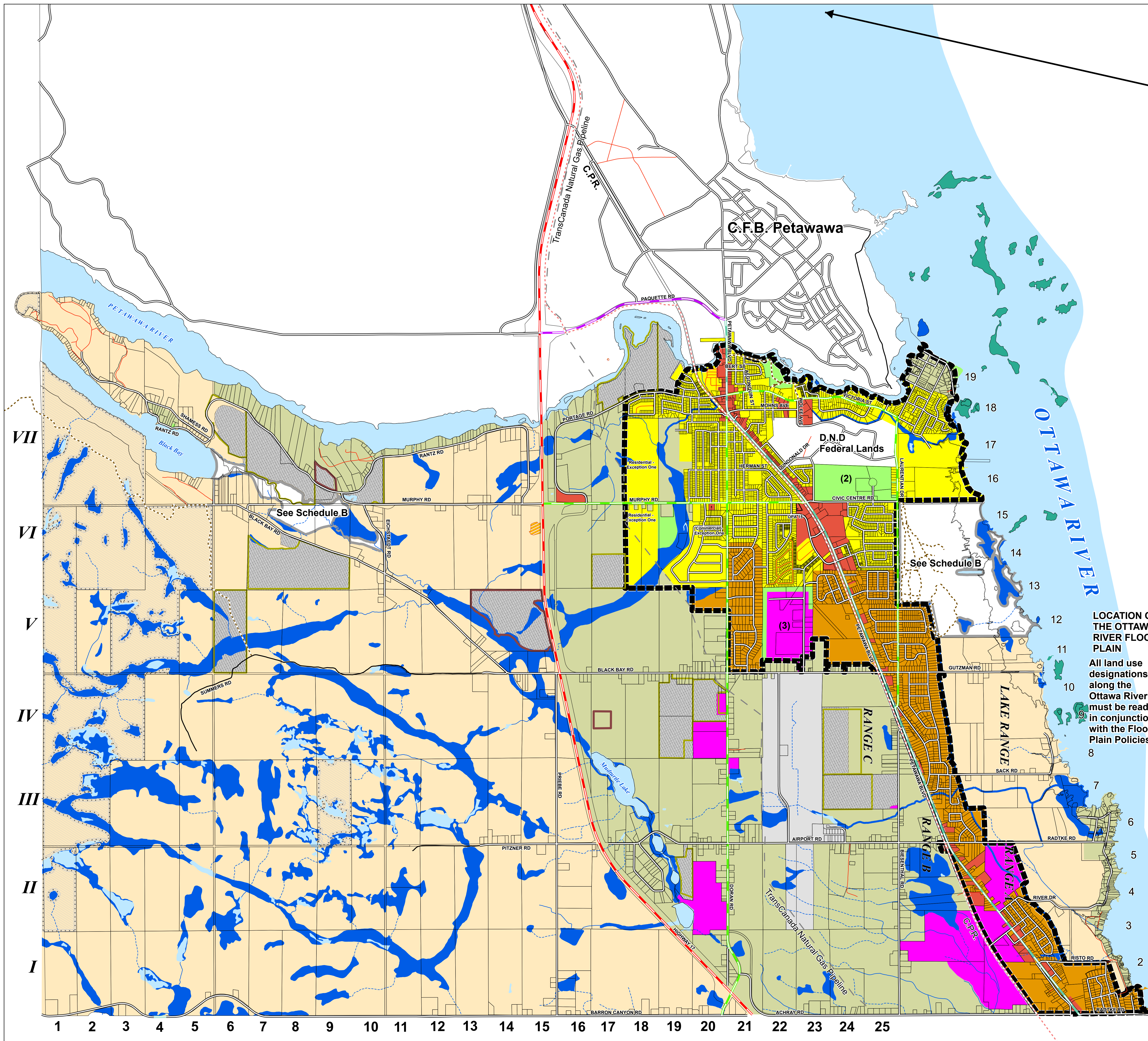




# Official Plan of the Town of Petawawa

## Schedule A - Land Use

Council Adoption: April 15, 2024  
County of Renfrew Approval: August 1, 2024



### Legend

	Settlement Area Boundary		Provincial Highways
	Residential		Major Arterial Roads
	Suburban		Minor Arterial Roads
	Rural Residential		Collector Roads
	Rural		Local Roads
	Commercial		Seasonal Roads
	Industrial		Private Roads
	Mineral Aggregate Resources		
	Airport		
	Environmental Protection Area		
	Parks and Open Space		
	Island Residential		
	Crown Land		
	Property Parcels		
	Aggregate Site Authorized - Inactive		
	Aggregate Site Authorized - Active		
	Ottawa River Flood Plain		
	Permanent, Stream/River		
	Intermittent, Stream/River		
	TransCanada Natural Gas Pipeline		
	Algonquin Trail		
	Trail		
	Inactive Waste Disposal Site		

#### Special Policy Areas

- (1) Petawawa River and Black Bay (see Schedule B)
- (2) Petawawa Civic Centre
- (3) Petawawa Industrial/Business Park and Buffer
- (4) Petawawa Deer Yard (see Schedule B)
- (5) Black Bay Provincially Significant Wetland (see Schedule B)
- (6) Petawawa Terrace Provincial Park Area and Natural and Scientific Interest (ANSI) (see Schedule B)

Scale 1: 18,000

0 1,640 3,280 Feet  
0 500 1,000 Metres

Produced by WSP  
Sources: County of Renfrew, Ontario Ministry of Natural Resources and Land Information Ontario. © King's Printer for Ontario, 2022.

Map updated: August 12, 2024