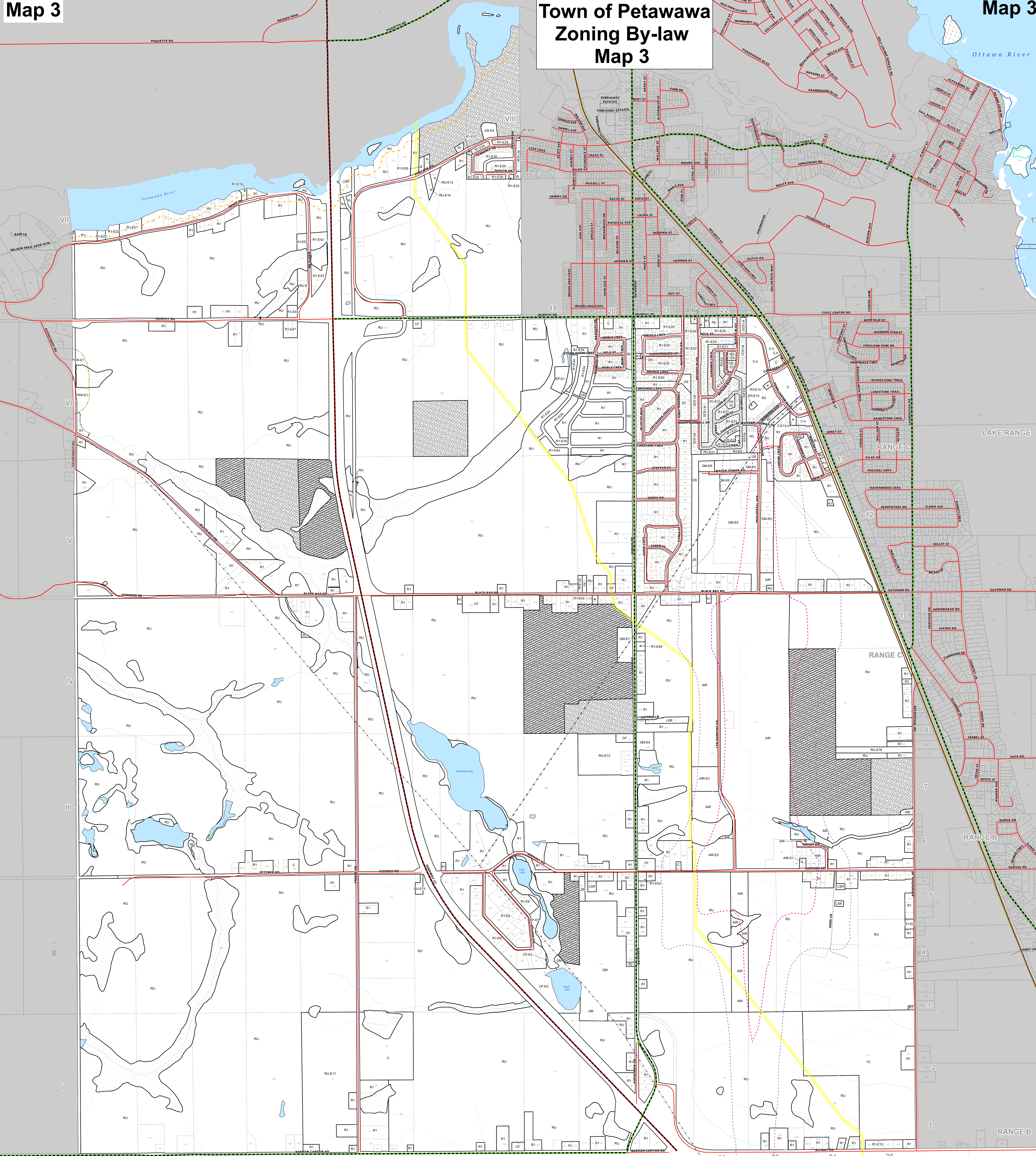


# Town of Petawawa Zoning By-law Map 3



- R1** Residential One
- R2** Residential Two
- R3** Residential Three
- LSR** Limited Service Residential
- IR** Island Residential
- MHP** Mobile Home Park
- C** Commercial
- TC** Tourism Commercial
- GM** General Industrial
- AIR** Airport
- RU** Rural
- CF** Community Facility
- OS** Open Space
- D** Development
- E1** Exception Zone
- h** Holding Zone

- Environmental Protection
- Provincially Significant Wetland (PSW)
- Open Water
- Extractive Industrial Reserve (EMR)
- Extractive Industrial
- Crown
- Area of Natural & Scientific Interest (ANSI)
- Pipeline
- Utility Line
- 50 m Buffer from Petawawa River & Black Bay See Section 3.24 of the Zoning By-law
- Floodline Boundary
- Regulatory Floodline
- Fill Line
- 120m Buffer from Black Bay Provincially Significant Wetland (PSW)
- Watercourse Permanent
- Watercourse Intermittent
- Provincial Highway
- County Road
- Municipal Maintained Road
- Private Road
- Ottawa Valley Recreational Trail / Algonquin Trail

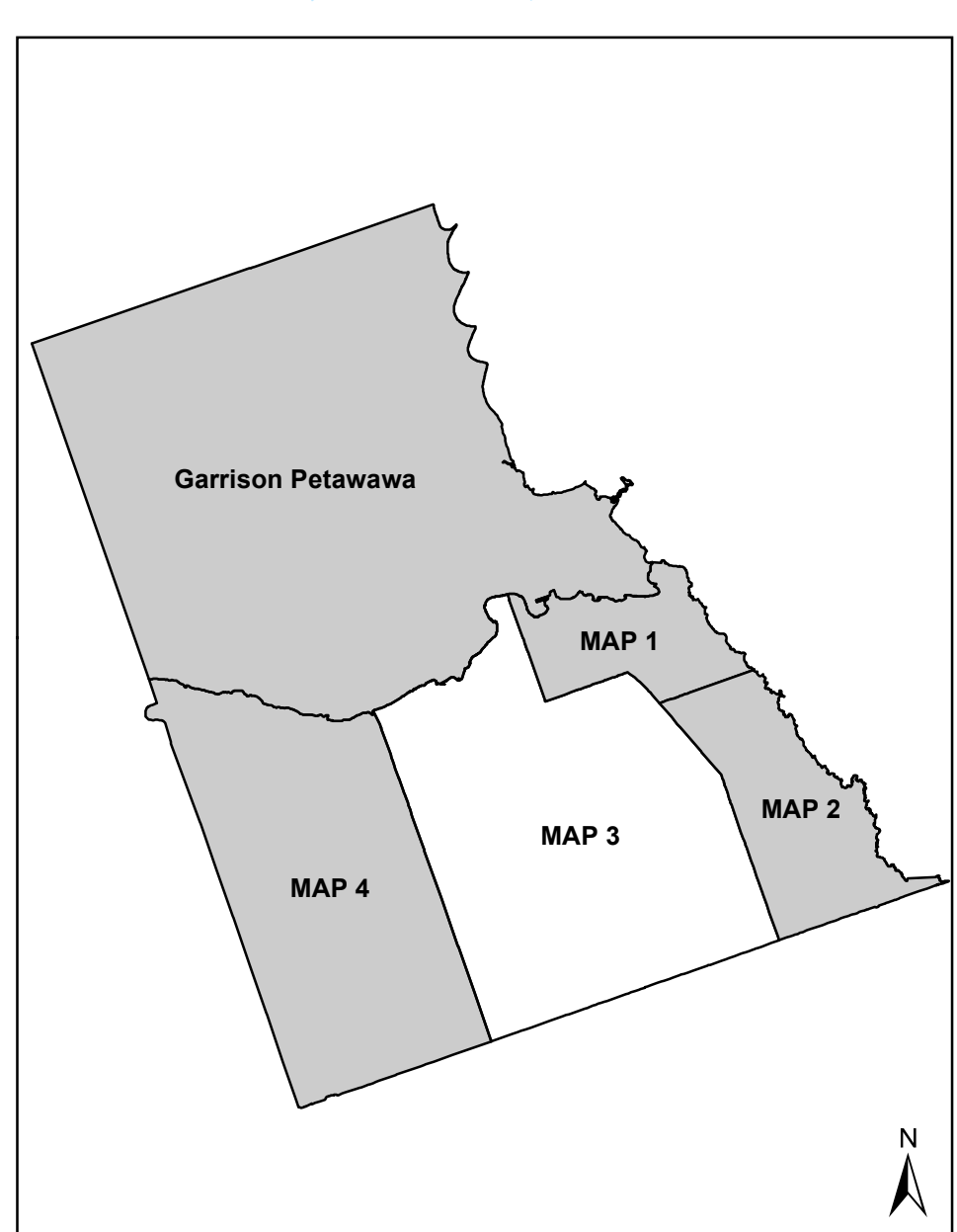
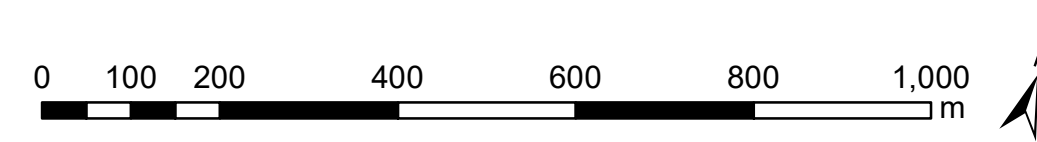
**Noise Exposure Forecast Pembroke Airport**

- 25 Decibels
- 30 Decibels

This is Schedule "A" to By-law No.456/07 as amended by By-law No. 1448/21,  
Passed on the 1<sup>st</sup> day of November, 2021.  
Signature of Signing Officers:

Mayor  
 Clerk

**Date Consolidated**  
May 6, 2024



**Renfrew** County of Renfrew  
Produced by: County of Renfrew Development and Property Department  
© 2016, 2021  
This map is illustrative only. Do not rely on it as being a precise indication of values, quantities of materials, or as a guide to navigation. The County of Renfrew staff will be liable in any way for the error or omission upon this map or any information on this map.  
October 27, 2021  
© 2016, County of Renfrew